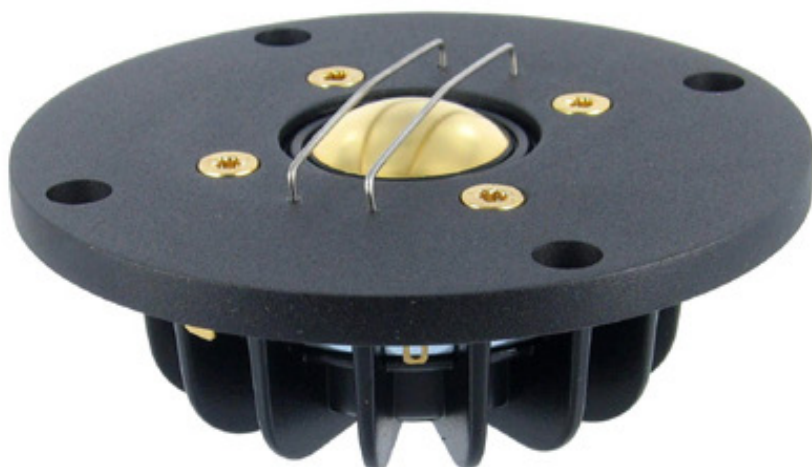
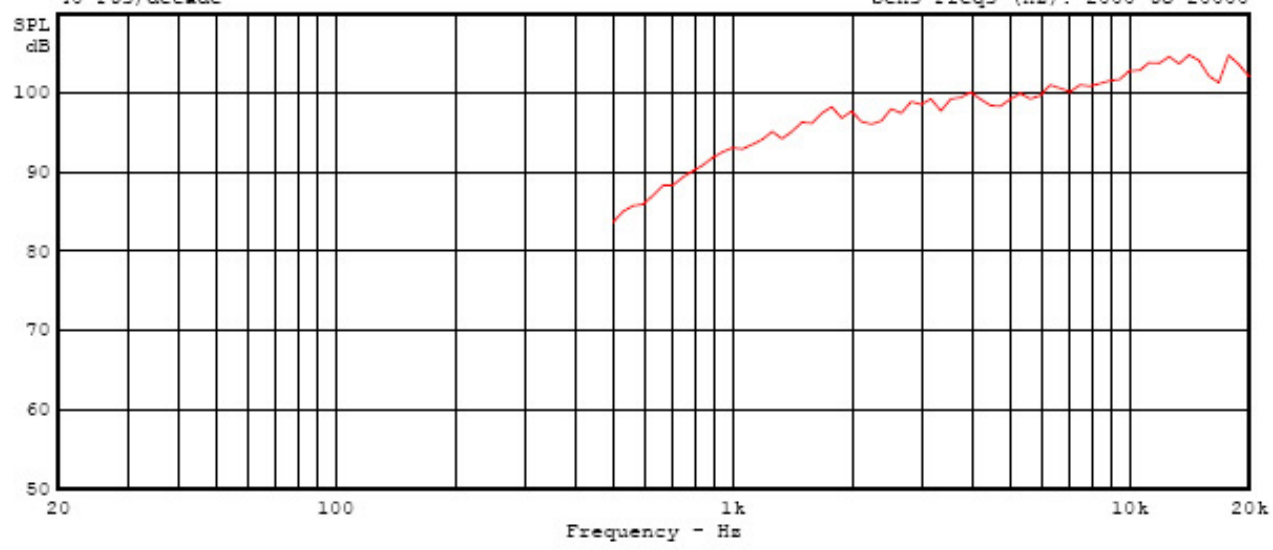


F0:	1017.24 Hz
DCR:	5.69 ohm
Znom:	6.56 ohm
@ Fnom:	5000 Hz
Qm:	2.97
Qe:	0.73
Qt:	0.59
Zmax:	28.93 ohm



Frequency Response for 2.8 V Stepped Sine Input at 0.5 m Spec Sens (1 m) = 94.5 dB  
 40 Pts/decade Sens Freqs (Hz): 2000 to 20000



Impedance Magnitude and Phase for 1.0 V Input 80 Pts/decade

